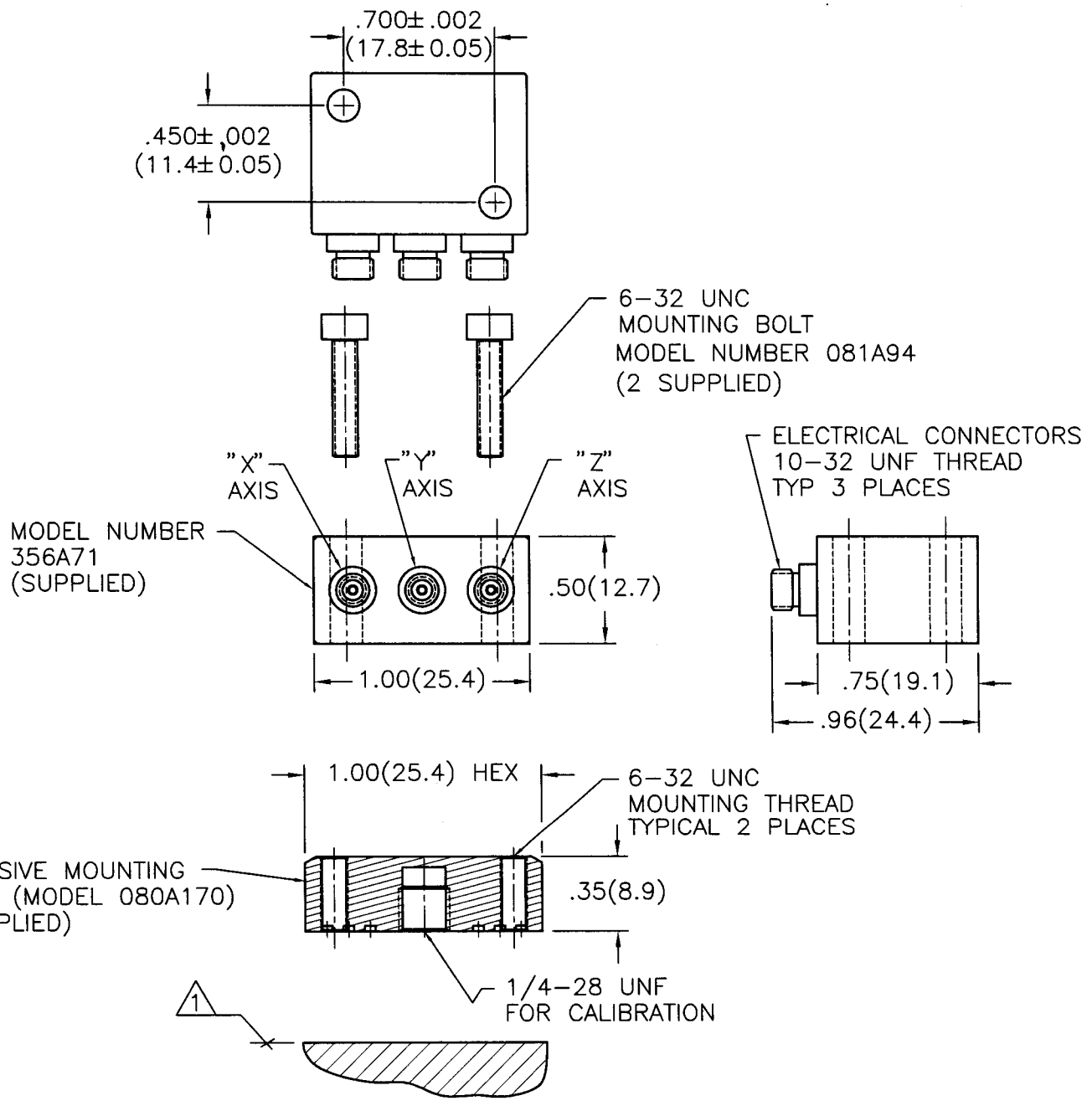


15627

PCB Piezotronics Inc. claims proprietary rights in the information disclosed hereon. Neither it nor any reproduction thereof will be disclosed to others without written consent of PCB Piezotronics Inc.

APPLICATION			REVISIONS				
NEXT ASS'Y	USED ON	VAR	REV	DESCRIPTION	ECN	DATE	APP'D



- 3.) FOR SEMI-PERMANENT MOUNTING USE QUICK BONDER (080A90) OR EQUIVALENT.
 - 2.) FOR TEMPORARY MOUNTING APPLICATIONS, USE PETRO WAX (MODEL 080A109).
- ⚠️ RECOMMENDED MOUNTING SURFACE SHOULD BE FLAT TO WITHIN 0.003 TIR OVER $\phi 1.25$ WITH A 32/ FINISH FOR BEST RESULTS.

UNLESS SPECIFIED TOLERANCES		DRAWN			MFG		PCB PIEZOTRONICS™	
DIMENSIONS IN INCHES	DIMENSIONS IN MILLIMETERS (IN PARENTHESIS)	SKZ	2/10/01	Q	2-15-01	3425 WALDEN AVE. DEPEW, NY 14043 (716) 684-0001 EMAIL: SALES@PCB.COM		
DECIMALS XX ±.01	DECIMALS XX ±0.3	CHK'D	2/15/01	ENGR	1/3	CODE IDENT. NO. 52681		
XXX ±.005	XXX ±0.13	APP'D	2/15/01	SD	2/15/01	DWG. NO. 15627		
ANGLES ±2 DEGREES	ANGLES ±2 DEGREES	TITLE				SCALE: .75X		
FILLETS AND RADII .003 - .005	FILLETS AND RADII (0.07 - 0.13)	INSTALLATION DRAWING MODEL 356A71 ACCELEROMETER				SHEET 1 OF 1		
DD011 REV. B 03/13/98								